



Getting Started with PatBase

Logging In

A screenshot of the PatBase login interface. The form is titled "PatBase Login" and contains the following elements: an "Email address" field with the text "support@minesoft.com"; a "Password" field with masked characters "....."; a section titled "Enter a sub account" with two checked checkboxes: "Remember my password" and "Continue last session"; a "Change email" button; a blue "Login" button; and a link "Forgot your password? [click here](#)" at the bottom.

Go to the secure PatBase login page <https://www.patbase.com> and enter your User ID (usually your email address) and password.

There is an additional option to “Enter a sub account”. Use the sub account option if you would like to charge a search to a named account.

There are two additional checkbox options:

- Remember my password – select this checkbox for PatBase to remember your login details.
- Continue last session – select this checkbox to continue working from the last PatBase session. Once logged in, the search history page will be displayed.

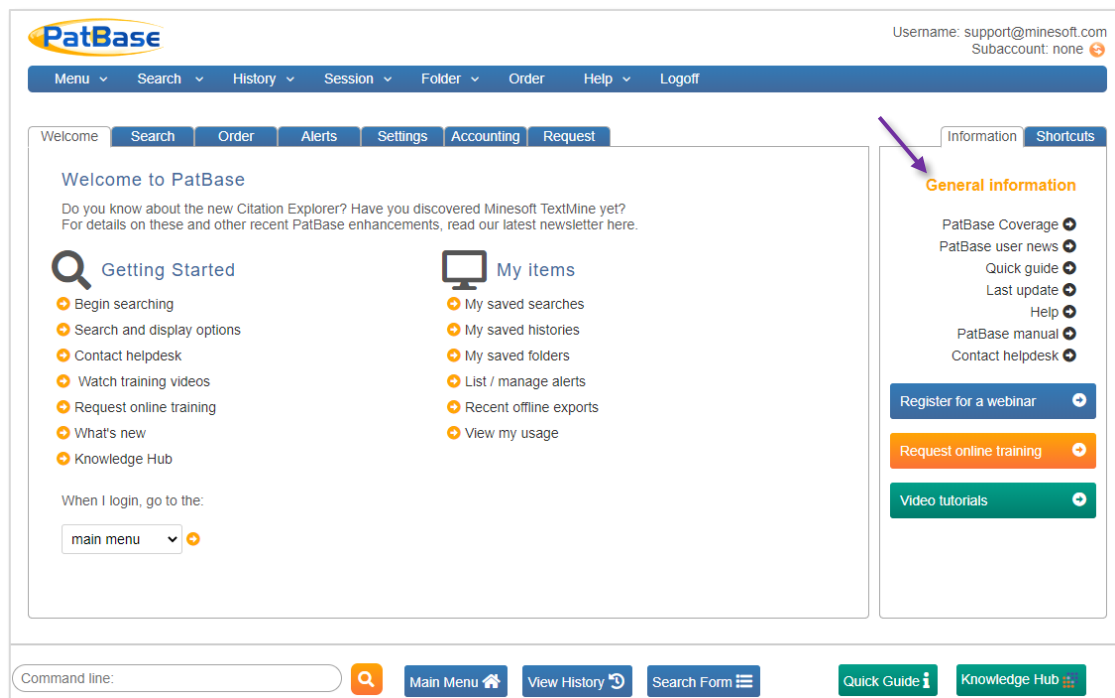
Please Note: *If one of your colleagues is using the same User ID, this may result in loss of data. We recommend that you do not share User IDs. Please contact us if you need additional User IDs. Additionally, as with all secure sites, avoid the internet browser forward and back buttons. We also recommend clearing temporary internet files regularly and that on the rare occasion of a failure, to log out and close the browser too.*

Forgot your password?

Click on the “forgot your password?” link to receive an email with the last password used when accessing PatBase. This email will be sent to the registered PatBase email address.

Welcome / Main Menu

When you first log in to PatBase, you are presented with the following display:



General information

Links to PatBase coverage information, PatBase news, PatBase command language, the PatBase Manual, helpdesk contact information and tutorial videos can be found in the right-hand column.

- [PatBase coverage](#) – Provides details of PatBase coverage including past weeks' data, also hyperlinks to detailed statistics for major countries.
- PatBase user news – Provides information with the latest updates and features in PatBase.
- [Quick guide](#) – Provides a quick reference to commands and functions available in PatBase, with examples given.
- Last Update – The latest data updates to PatBase.
- Help – A link to Help where topics are grouped together by subject (listed in the left-hand menu) so you can easily find what you are looking for.

- PatBase manual – A comprehensive manual provided in PDF format, so it can be saved to your PC for future reference.
- Contact helpdesk – Click to contact the PatBase Helpdesk.
- [Register for a webinar](#) – Click to register on one of our monthly running webinars.
- [Register for online training](#) - Request an online training with one of our training specialists at a time that suits you.
- [Video Tutorials](#) - Watch our short tutorial videos to improve your use of PatBase.

Navigating the main toolbar



Menu

Click to return to the Main menu, change your password, edit search/display options, or create an alert.

Search

Mouse over to reveal all search options (with exception of the command line) and search assistance tools. The command line is found at the bottom of the screen:



History

Click to view your searches and to save them.

Session

Click to view, export, or clear your current session log.

Folder

Click to create a new folder or view existing folders.

Order

Click to order PDFs.

Please Note: *A PatentOrder subscription is required to bulk download PDFs.*

Help

Click to view and search relevant help files.

Logoff

Click to log out of PatBase.

When on the Main menu page, a tab bar is also available below the main toolbar.



Many of these options are repeated elsewhere, but from these tab bars as well as Search (view all search options, search tools, search history, session, and folders), Order (order PDF's) and Alerts (create and manage any alerts you have set up) you can also view/edit all Settings options and view/edit all accounting options. Request provides options to Minesoft and RWS services outside of your PatBase subscription.

Settings

PatBase offers a variety of display and search options, which can be found in the top tool bar under Menu.

In here, you can define the default search and display using the drop-down menus. Tick the checkboxes to enable/disable certain features.

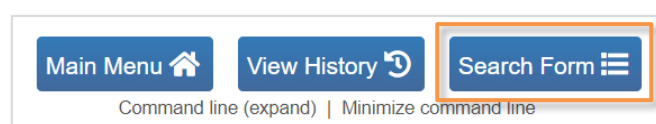
A screenshot of the PatBase Settings page. The page is titled 'Display options' and contains several sections:

- Display options:** Includes dropdown menus for 'Default keyword search' (Claims, title & abstract), 'Default record display format' (Classic), 'Default sorting order' (Publication date asc), and 'Search history display order' (Descending). It also has dropdowns for 'Default number of records to display' (10) and 'Export page size' (A4). A 'Define custom display format' button is present.
- Checkboxes:** A grid of checkboxes for various features. Checked items include: 'Allow multiple popups', 'View simple families', 'Do not display inventors names in assignee field', 'Show non-Latin assignees and inventors', 'Use larger fonts', 'Enable keyboard shortcuts for navigation of results', 'Use long field names in table format exports', and 'Dead or alive'. Unchecked items include: 'Disable floating toolbar' and 'Use larger fonts'.
- Sort family table by:** A dropdown menu set to 'Custom order' and a text input field containing 'US WO EP' with the example 'e.g. WO EP US'.
- Search options:** Includes checkboxes for 'Enable Japanese classification' (checked), 'Expand command line' (unchecked), 'Enable autosuggest' (checked), 'Enable German classification' (checked), and 'Use symbols: + - , as boolean operators' (unchecked). A 'Delete autosuggest data' button is also present.
- Other options:** Includes a checkbox for 'Do not receive marketing material from PatBase' (unchecked).
- Buttons:** A 'Change interface language' button and a 'Save options' button (highlighted in orange with a purple arrow pointing to it).


Remember to select the “save options” button at the bottom of the settings page for the changes to take effect.


Using the Search Form

The main search form provides a search structure and can be used at any time during a PatBase session. It can help users to become more familiar with command line searching and field qualifiers. Access the search form from the bottom banner or from the top toolbar under Search / Search Form.



Enter search criteria into the fields provided. Multiple fields can be searched at once and is automatically combined with the Boolean operator **AND**.

Example inputs for each search field is listed on the right-hand side. Click on the information icon  to access the relevant section of the PatBase Help Files section for more detailed information.

Click on the magnifying icon  displayed on the left-hand side of some search fields to access the Browse index for the selected field. This is a useful feature as it contains the contents of the database index, which enables variations of spelling to be explored before the search is submitted.

Keyword search

The first search field in the Search Form is the keyword search. The default patent text area to search is the title, abstract & claims (unless changed in the Search/Display options). Use the drop-down menu to search keywords in:

- Full text (FT)
- Title, abstract & claims (TAC)
- Title & abstract (TA)
- Claims (CL)
- Descriptions (DSC)

Both Latin and non-Latin keyword(s) can be searched within the same keyword search field. Boolean, truncation, and proximity operators can be used. If no operator is used, keywords separated by a space, e.g., **artificial intelligence**, will be searched as an exact phrase (adjacent to one another).

Please refer to the Quick guide found in the bottom toolbar for more information on PatBase command language.

Assignee and inventor search

The assignee search field searches across all patent assignee fields which includes probable assignee, standardised and non-standardised patent assignees.

The inventor search field searches both the standardised and non-standardised Inventor field.

The assignee and inventor field are automatically truncated so it is not necessary to add truncation. Please refer to the standardised and non-standardised names for more information.

Numbers and date search

Publication, priority, and application numbers can be entered if there is a specific patent of interest. In PatBase, these numbers start with a two-letter country code, followed by 1-10 digits, depending on the authority. (CCnnnnnnnnnn)

Dates can be entered as well. The date format for all these fields are a 4-digit year, followed by an optional 2-digit month and 2-digit day (YYYYMMDD).

- **From:** will search dates greater than the entered date
- **To:** will search dates less than the entered date
- **Equals:** will search the exact date specified

Countries and kind codes search

There is a field to search for Kind Codes and below that, there are fields to search for Publications Countries and Designated States. For these two country fields, the format to enter is the two-letter country code (CC) of the jurisdiction.

Agents, citations, and classifications search

Finally, there are fields to search for agent data, cited patent number, and Classification Codes. The drop-down menu on the left lists available classification systems that can be searched. Select "Super Class" to search across all classification systems.

***Please Note:** When searching classifications, the German and Japanese Classification search options are only available if enabled in the Settings / Search & Display Options.*

Additional options

At the end of the search form, there are two additional checkbox options:

- **Search within the same publication** - This means that entered search fields within the search form must match the same publication within a family. If this option is not selected, then the entered search fields could match a PatBase family but does not necessarily match just a single publication within the family.
- **Include machine translations** - This means the search will expand and look for keyword hits across the original and machine translated text.

Click 'Search' to run the search criteria. To empty the form, click 'Clear'.

The screenshot shows a search form with the following fields and values:

- Title, abstract & Claims: artificial intelligence OR 人工智能 (27,362 families)
- Assignee (PA): (empty)
- Inventor (IN): (empty)
- Publication number (PN): (empty)
- Publication date (PD): from: 2010 to: (empty) equals: (empty) (31,062,421 families)
- Priority number (PR): (empty)
- Priority date (PRD): from: (empty) to: (empty) equals: (empty)
- Application number (AP): (empty)
- Application date (APD): from: (empty) to: (empty) equals: (empty)
- Kind Code (KD): (empty)
- Publication country (CC): US or CN (37,103,268 families)
- Designated states (DS): (empty)
- Agent (AG): (empty)
- Cited patent (CT): (empty)
- Int. class (All): (empty)

At the bottom of the form, there are two checked checkboxes: "Search within the same publication" and "Include machine translations". Below these are "Search" and "Clear" buttons. The total number of families matching all criteria is displayed in green as 19,576 families.

When typing in search fields, the Search Form instantly displays the number of matching results for the entered field on the right-hand side. At the bottom of the Search Form, the number of results matching all search criteria entered on the Search Form is displayed in green.

Please Note: When searching classifications, the German and Japanese Classification search options are only available if enabled in the Search & display options found under the Settings tab.

Search History

The Search history page displays all the searches you have run. An option to “Clear search history” is found in the top tool bar under the History tab.

3	TAC=(fiber* and fiber*)	1,301,771	View Browse Hits Optimise Export More...
2	1 AND IC=(C11D3 OR A61K8 OR B32B5)	1,695	View Browse Hits Optimise Export More...
1	tac=(fabric and (soften# or condition#)) and PD>201505 and CC=(US or EP or WO or JP)	5,395	View Browse Hits Optimise Export More...

Searches are numbered and can easily be combined in the command line:

The above search combines searches #2 and #3.

#	Search query	Results	Options
5	FN=52661002	1	View Browse Hits Optimise Export More...
4	2 and 3	511	View Browse Hits Optimise Export More...
3	TAC=(fiber* and fiber*)	1,301,771	View Browse Hits Optimise Export More...
2	1 AND IC=(C11D3 OR A61K8 OR B32B5)	1,695	View Browse Hits Optimise Export More...
1	tac=(fabric and (soften# or condition#)) and PD>201505 and CC=(US or EP or WO or JP)	5,395	View Browse Hits Optimise Export More...

Please note: Clicking on the red number of a search line, will enter that search query into the command line. This enables users to edit the search criteria in the command line.

Next to your Results there are options to View, Browse, Hits, Optimise, Export and More...

View, Browse and Hits

To view your search results, click on View or Browse. Alternatively, select Hit to view a hit map which displays the frequency of keywords in a document.

Optimise

Filter results by Companies, Technologies, Publication dates and Countries using the Optimise button.

Export

Export data/results in a variety of formats. For more information on exporting, please see "Exporting data from PatBase" user guide.

More...

Select "More..." for additional options to appear in the right-hand column such as PatBase Analytics, publish results, save search, add results to a folder, set this search as a filter and assign custom user fields.

Viewing a PatBase Record

Each PatBase family record represents one invention and is identified with a unique PatBase family number. The representative publication for the family is displayed in brackets next to the family number, also known as the master patent, which is the source of the representative title, abstract and image displayed for the family.

1) Family number: 63075176 (US2016369661 AA)

When users find a record of interest it is easy to further examine a family and its publications by utilising tools and links provided. Links are provided along the family bar to view Similar patents, Translate patents, display Full-text, display legal Status, display Citations and display Family Insight.

Search 2: "UE>1852 and SC=(A61M16/04 or A61M16/10 or A61M16/20 or A61F13/02..." 1-10 of 6,839 next>>

Display format: Classic Sorted by: Publication date desc

1) Family number: 55481905 (US2015151075 AA)

Similar • Translate • Full-text • Status • Citations • Insight



Title: [EN] BREATHING ASSISTANCE APPARATUS

Abstract: Source: US2015151075 AA [EN] A pressure regulating device for use with a breathing assistance and/or resuscitation apparatus, which conveys gases along a gases pathway to a patient, includes a mounting for connecting the pressure regulating device to a first outlet in fluid communication with the gases pathway. The mounting holds a valve member that selectively blocks, at least in part, the first outlet. A control member can be manipulated to adjust a property of the valve member. The valve member at least partially blocks the first outlet when the pressure of gases in the pathway is below a selected level, and allows at least a portion of the gases to flow out of the first outlet when the pressure of said gases is above the selected level. The property includes a selected level of pressure whereby manipulation of the control member adjusts the level of pressure between a maximum level and a minimum level.

+ Add Custom User Fields

Classifications are displayed for the whole family. Click on the Classification Explorer link to retrieve a list of all the classifications with their descriptions in a family. Alternatively, hover over a classification to retrieve the description and hierarchy of the classification in a pop-up.

Family table

The family table lists all members (publications) within the family, including information on publication/application numbers and publication/application dates. Users have the option of viewing the PDF (click on the PDF  icon), linking to the National Register (click on the  icon), or ordering the full PDF patent copy. To order a PDF patent copy, tick the relevant checkbox(es) .

1) Family number: 63075176 (US2016369661 AA)

Title: [EN] CONTINUOUS VARIABLE VALVE LIFT APPARATUS AND ENGINE PROVIDED WITH THE SAME

Abstract: Source: US2016369661 AA [EN] A continuously variable valve lift apparatus may include a camshaft, a cam portion on which a cam is formed and to which the camshaft is rotatably inserted and is movable with respect to the camshaft, a control portion selectively changing the position of the slider housing, an output portion rotatably formed. The valve shoe drives a valve unit.

+ Add Custom User Fields

Classifications: [Classification Explorer](#)

International (IPC 8-9): F01L1/04 F01L1/047 F01L1/053 F01L1/12 F01L1/18 F01L1/24 F01L1/26 **F01L1/34** F01L1/344 F01L13/00 F02D13/02

CPC: F01L1/053 F01L1/185 F01L1/2405 F01L1/267 F01L13/0026 F01L2001/0473 F01L2001/0476 F01L2001/0477

US: 1/1 123/90.17


German class: F01L1/047 F01L1/12C1

Family: [Family Explorer](#)

Publication number	Publication date	Application number	Application date	Links
CN106256998 A	20161228	CN201510903046	20151209	<input type="checkbox"/>
CN106256998 B	20200327	CN201510903046	20151209	<input type="checkbox"/>
DE102015121313 A1	20161222	DE201510121313	20151208	<input type="checkbox"/>
KR101646135 B1	20160805	KR20150088630	20150622	<input type="checkbox"/>
US2016369661 AA	20161222	US20150952408	20151125	<input type="checkbox"/>
US9835058 BB	20171205	US20150952408	20151125	<input checked="" type="checkbox"/>

Priority: [Priority Map](#)

KR20150088630 20150622

Probable Assignee: HYUNDAI MOTOR CO 

IPC - class definition for F01L1/34 X

F - Mechanical engineering; lighting; heating; weapons; blasting

F01 - Machines or engines in general; engine plants in general; steam engines

F01L - Cyclically operating valves for machines or engines

F01L1/00 - Valve-gear or valve arrangements, e.g. lift-valve gear

F01L1/34 - Characterised by the provision of means for changing the timi...

Dead or Alive indicator

The Dead or Alive tag is intended as a quick indicator of a record's status, but as per the disclaimer accompanying the legal status pages, the legal status provided cannot be guaranteed to be 100% complete and accurate, and a qualified attorney should be consulted for advice if required. For example, if the latest event shows that the record's maintenance fees are not paid on time, then the record is deemed not to be in force, and

Enable the dead or alive tags option in Display & Search options to view this information in the family table. A red tag means the publication is deemed dead and a green tag means the publication is deemed alive.

Publication number	Publication date	Application number	Application date	Links
WO14151644 A2	20140925	WO2014US26159	20140313	<input type="checkbox"/>
WO14151644 A3	20150115	WO2014US26159	20140313	<input type="checkbox"/>
EP2970467 A2	20160120	EP20140714135	20140313	<input type="checkbox"/>
EP2970467 B1	20181017	EP20140714135	20140313	<input type="checkbox"/>

Images

Where available a representative image will be displayed with bibliographic information. If users wish to see an image within their bibliographic data, select a 'Display format' that supports an image.

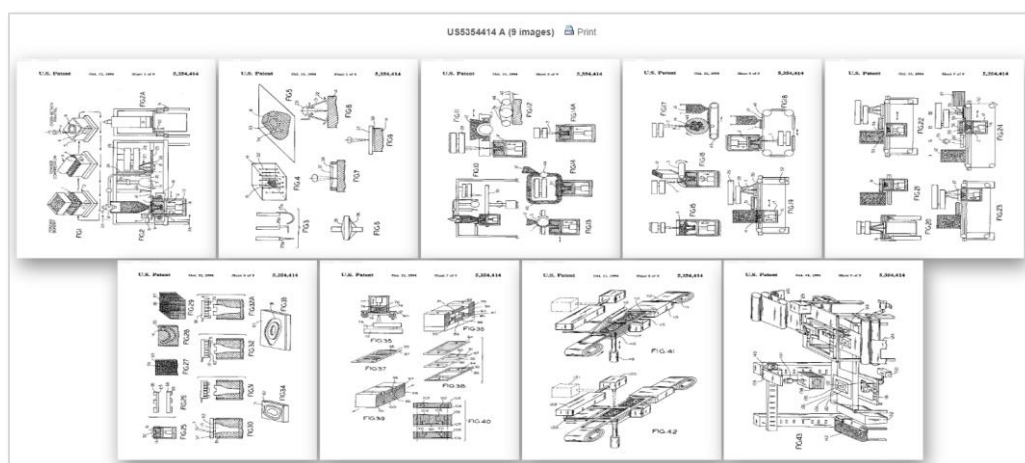
To view all images on a larger scale for a family, click on a displayed image within a record. This will open an image viewer where all images for each member of a PatBase family can be viewed in detail. The numbers of publications containing images are listed at the top of the page and can be navigated between. The number of images a publication has is given in brackets after the publication number. Enhanced zoom function allows users to rotate and examine the images in greater detail.

Keyboard shortcuts can be used to quickly navigate through images.

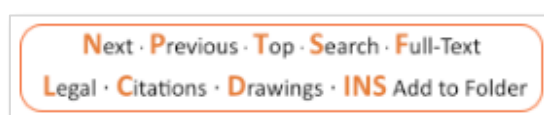
N – Next image

P – Previous image

R – Rotate image



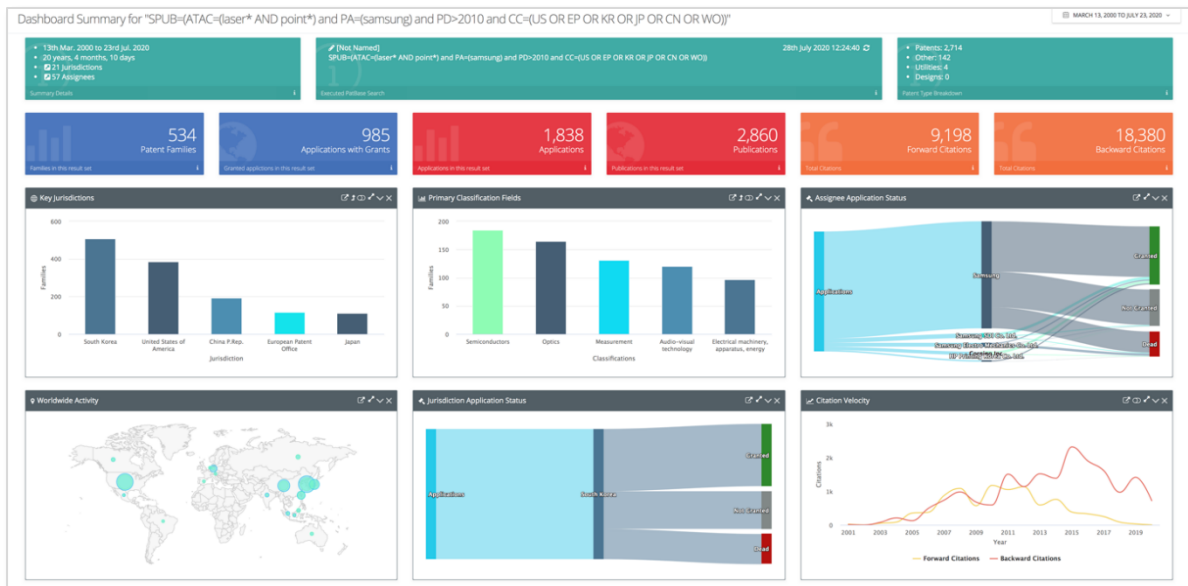
Enable the Keyboard shortcuts in your settings to navigate the records in PatBase.



Analysing the Results

A graphical analysis of a result set is available through PatBase Analytics. Access this tool from the Search History page, by clicking on "More..." next to the results set to be analysed, then selecting "PatBase Analytics" in the right-hand column. Alternatively select

the Analytics tab along the top, when viewing records in the View or Hits mode. This will produce a dashboard page with analysis menu options along the left-hand side.



Create an Alert

You can create an alert to keep up to date with technological developments and monitor competitive intelligence without the need to login to PatBase and run searches manually.

In an alert you can include specific Patent Classification codes (subject) and/or Assignee data (competitors) and keyword searches for example. Results can be delivered to PatBase users and non-PatBase users so that information is easily shared with colleagues.

There are 2 ways to set up an alert:

1. From the Search History page, click on more... against the search query to be used to create the alert. This will link through to the Alert set-up screen with the search strategy automatically added to the Alert query box. If the alert should consist of a combination of search queries, then click on more... against the last search step to be included in the alert.

Menu Search History Session Folder Order Help Logoff

Information Shortcuts

Search History

Save Search History Clear Search History Export Search History

#	Search query	Results	Options
4	2 and 3	511	View Browse Hits Optimise Export More...
3	TAC=(fiber* and fiber*)	1,301,771	View Browse Hits Optimise Export More...
2	1 AND IC=(C11D3 OR A61K8 OR B32B5)	1,695	View Browse Hits Optimise Export More...
1	tac=(fabric and (soften# or condition#)) and PD>201505 and CC=(US or EP or WO or JP)	5,395	View Browse Hits Optimise Export More...

4: More options

- PatBase Analytics
- Class Analysis
- Snapshot
- Explore search
- Export search results
- Publish / Send results
- Add to results folder
- Save search
- Order documents
- Assign Custom
- Set as a browser menu
- Save as an alert
- Create alert**
- Send to IPShare
- Cancel

- From the Menu tab in the tool bar or within the Alerts tab in the Main Menu, click on Create a new alert. The alert set-up screen will appear from where the alert can be created.

Add a new alert

Alert name:

Alert query:

Email to:
(Separate multiple email addresses with a semi colon)

Do not send email when alert returns zero results.

Text to include in alert email:

Alert frequency: Weekly Monthly

Display format:

Alert options: New families only
 New families and when new publications are added
Show advanced options 📄